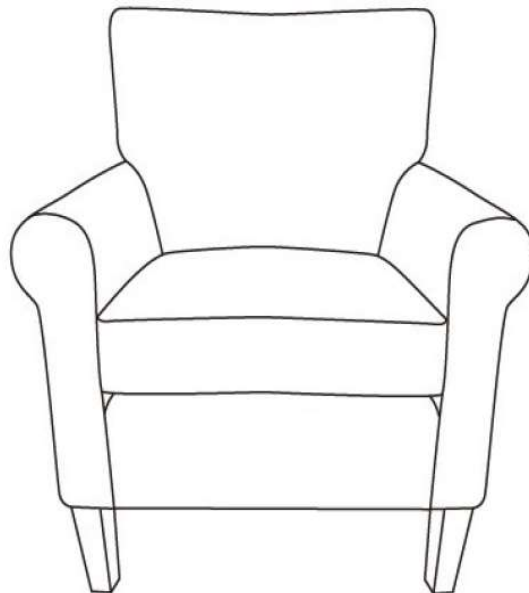


Assembly Instructions



Caution : You must read this before you proceed

Please look in the magic tape pouch for legs



Club Chair



Parts List

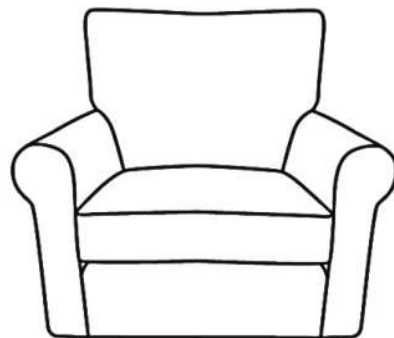
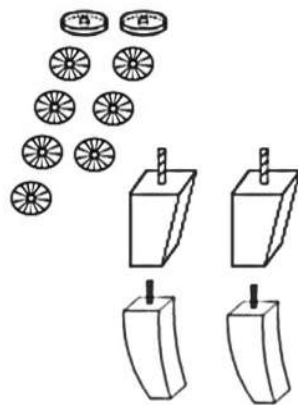
Label	Picture	Description	QTY
A		Chair	1
B	 B1 B2	Wooden Leg	B1-2 B2-2

Assembly Preparation

Label	Picture	Description	QTY
①		Washer Rings	7
②		Silicon Washer	2

Assembly Preparation

Before Beginning Assembly :



- Read instructions, cover to cover-



- Have 2 adults on hand for assembly-



- Do not assemble on flooring or carpet-



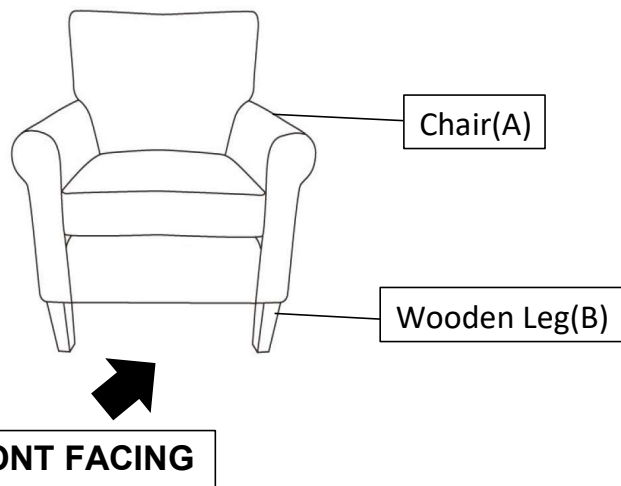
- Assemble on a clean non-marring surface (packing foam)-



- Save all packaging until finished-

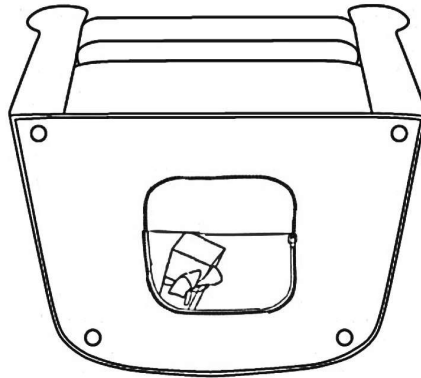
Assembly Steps

OVERVIEW



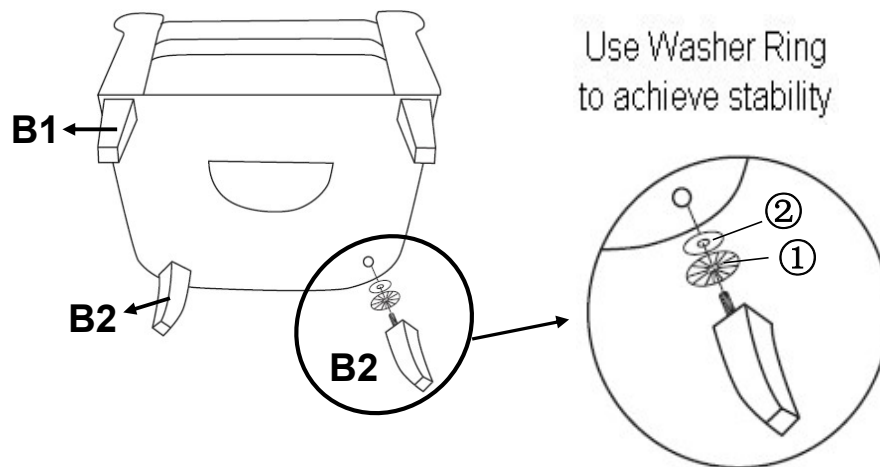
This Club Chair has multiple parts and may require up to some 30 minutes to assemble. To give you an overview of the Club Chair parts, the above picture is to help you put the various parts into perspective. Please read through the instructions below to familiarise yourself with the parts and steps before assembly.

Step 1



Position the Chair on its back, as shown.
 (DO NOT place on surface that can scratch or damage upholstery.)
 Unzip the pouch located on the underside of the chair as shown in picture.
 Remove the box from inside this pouch.
 Open the inner box and take out the 4 Wooden legs provided. Close pouch before assembling.

Step 2



Install the B1 leg into the screw holes under the front of the chair.
 Placing a washer ring(①) (improves tightness) around threaded bolt in the leg. Install the B2 leg into the screw holes under the back of the chair.
 Placing a washer ring(①) and a Silicon Washer(②) around threaded bolt in the leg.
 Then insert the threaded bolt into the bolt point at the bottom of the chair.
 Tighten leg by turning clockwise.
 Repeat the same procedure to install the three remaining legs.
 B1 - STRAIGHT legs are chair's FRONT legs.
 B2 - CURVED legs are chair's REAR legs. Install B2 need use Silicon Washer(②) to achieve stability.

Care & Maintenance



- Furniture may scratch floors. We recommend using furniture pads to protect your floors.



- Do not put hot items directly on furniture surface.



- Do not clean furniture with harsh cleansers or polish.



- Do not place furniture under direct sunlight.



- Do not place furniture near heating or cooling vents.



- Do not write on furniture without a padded barrier to protect the surface.



- Do not place furniture outside . For indoor use only.



- Not for commercial use. For residential use only.



- Stains may be removed with mild soap solution and damp cloth.



- Children should not climb or jump on the furniture.



- Dust and pick-up spills using a clean, non-colored, lint-free cloth.