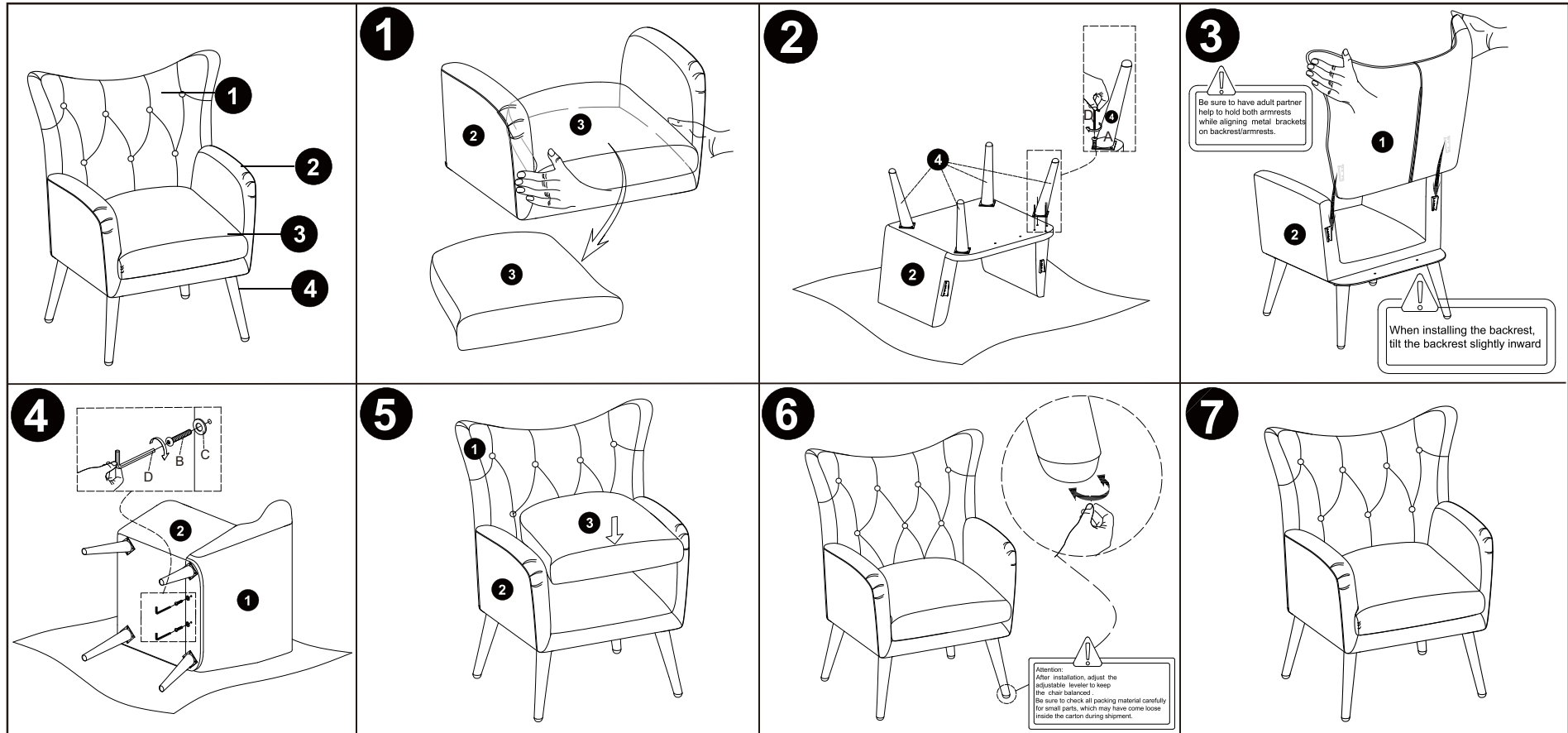

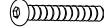




AC005 ASSEMBLY INSTRUCCION



HARDWARE LIST	CODE	PARTS	QTY.
	1	Backrest	1
	2	Seat Frame	1
	3	Seat cushion	1
4	Leg	4	

HARDWARE LIST	CODE	PARTS	QTY.
	A	M6X20MM 	16
	B	M6X50MM 	2
	C	M8X22MM 	2
D	M6 	1	