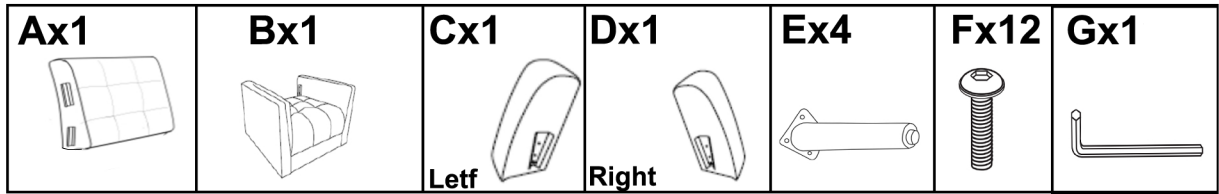


# Assembly Instruction



**1. As shown in the figure. Insert the backrest until the backrest does not shake.**

Please open the bottom and take out the foot.

Install the Leg (E) into the bottom of the Chair Seat Base (B)

**2. As show as picture.**

Seat Base (B)

Backrest Panel (A)

**3. As show as picture.**

Back Left Side(C)

Backrest Panel(A)

Back Right Side(D)

**4. FINISH!**